

SAS Deployment Wizard

Specify Order Details

Edit the description and add notes for this order to aid with future tracking.

Review the contents of the order you are working with. You can create a custom description and notes to differentiate this order from others in your SAS Software Depot.

Order number:

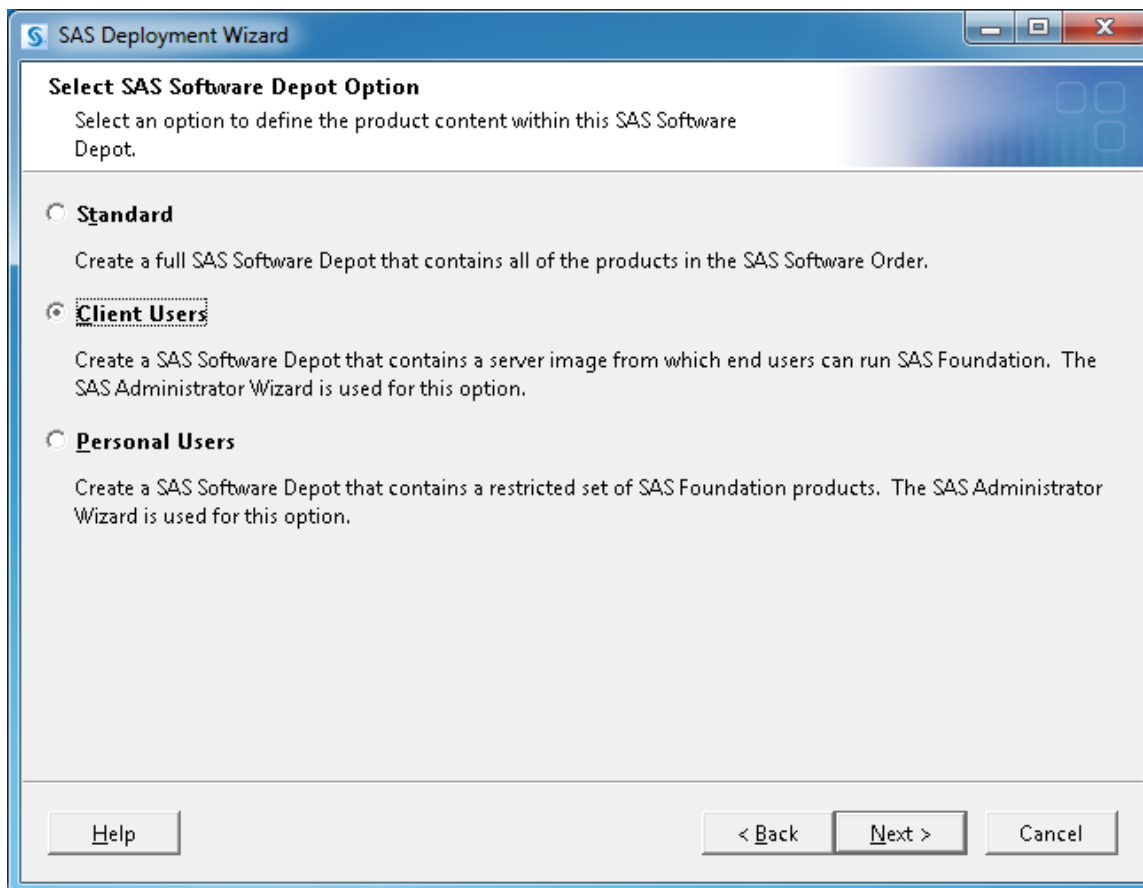
Description:

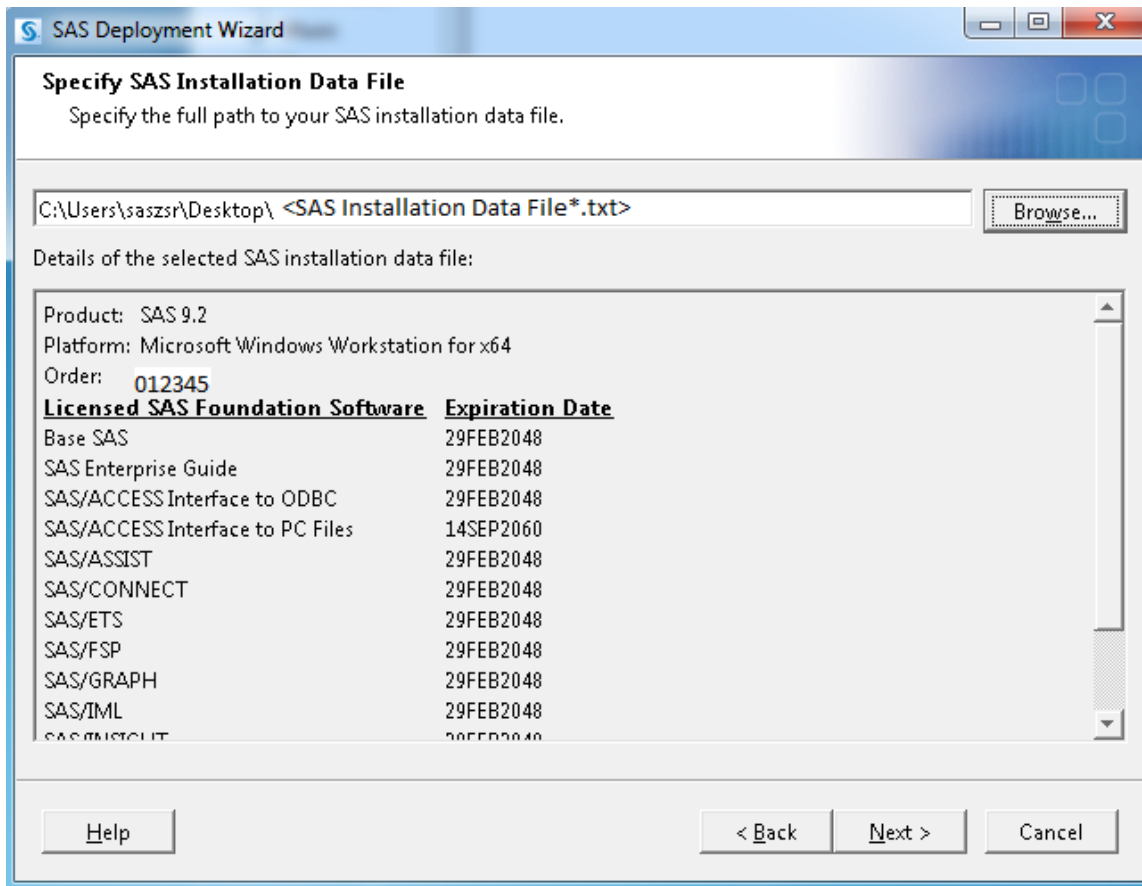
Notes:

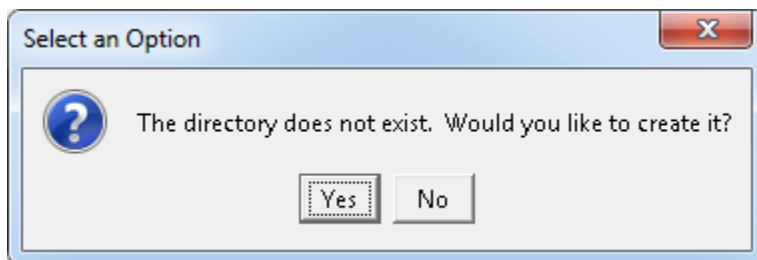
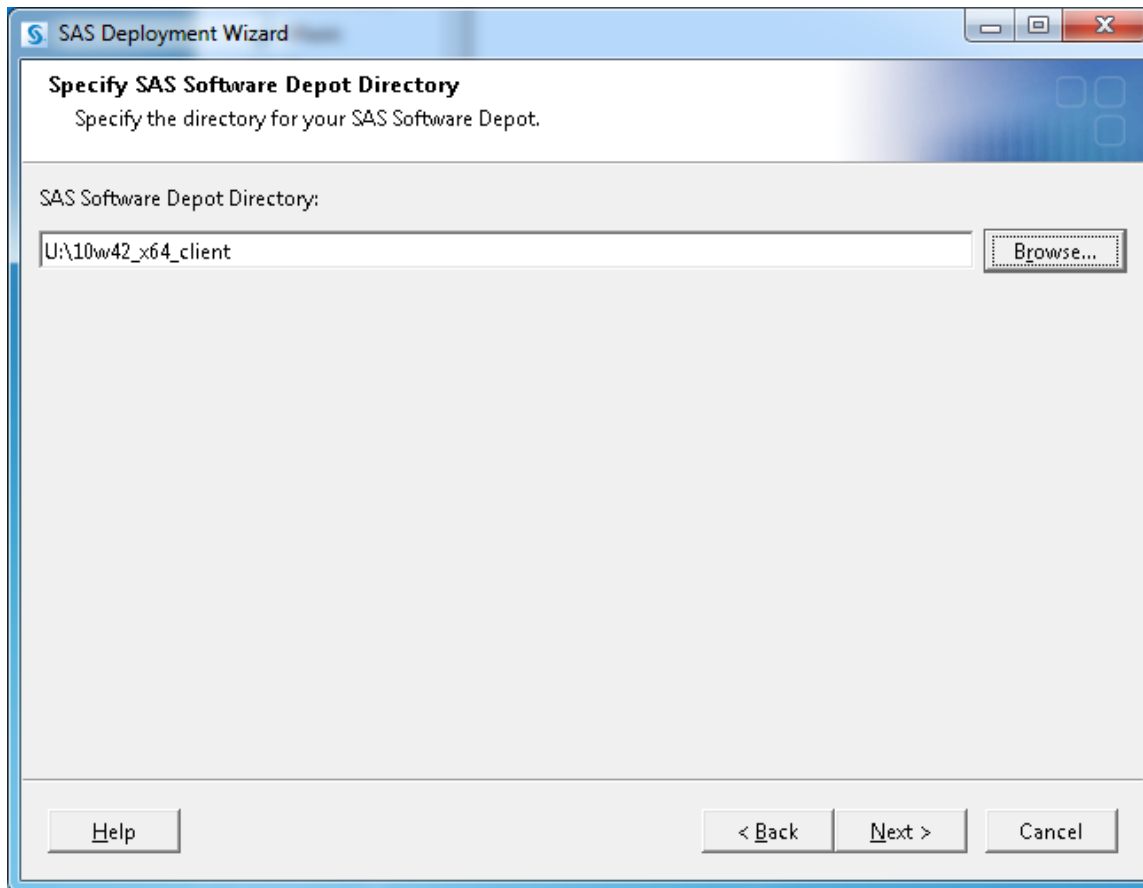
[Click to see the contents of your order that correspond with the SAS Products to Install below](#)

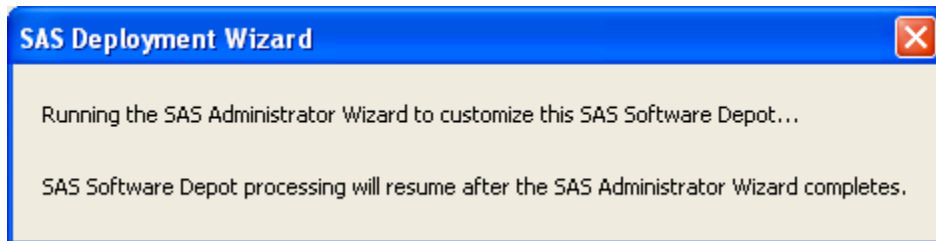
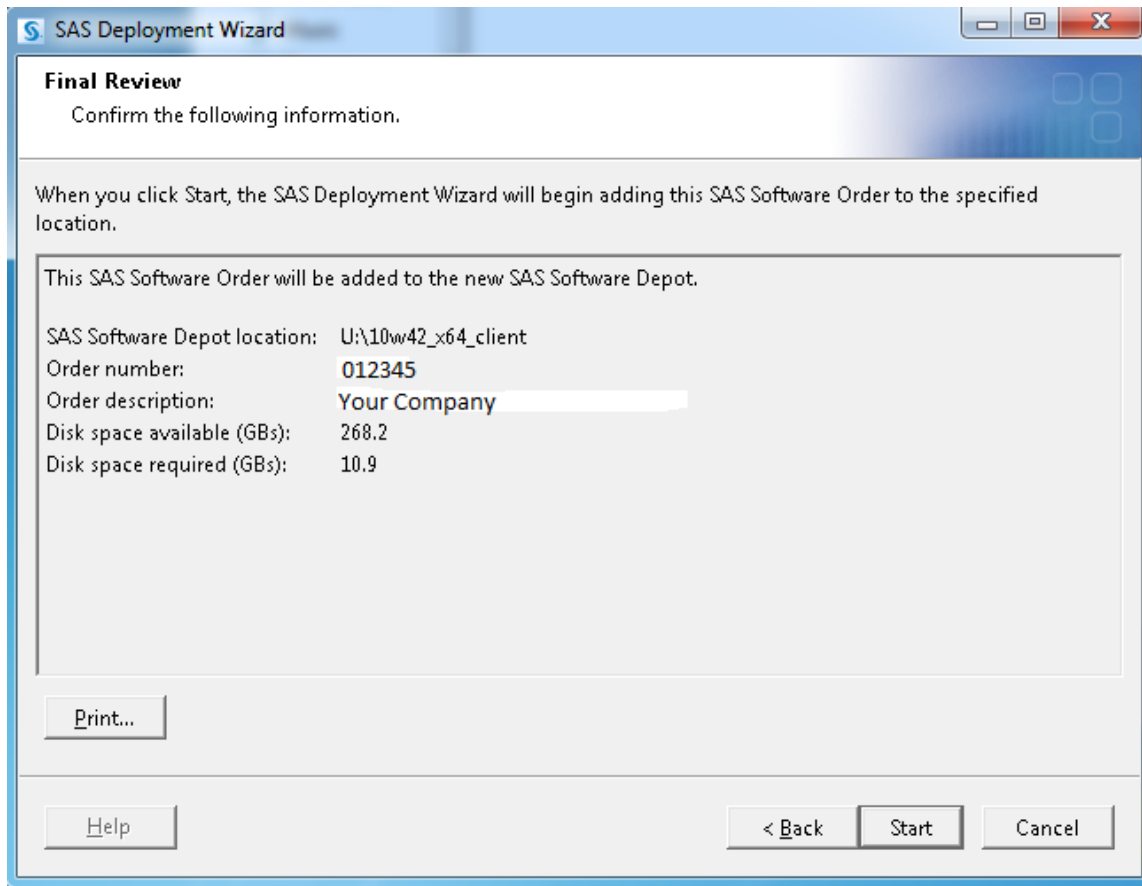
SAS Products to Install:

- 1. SAS Foundation
- 2. Report Fonts for Clients
- 3. SAS Client Connection Profile Configuration
- 4. SAS Deployment Tester - Client
- 5. SAS Deployment Tester - Server

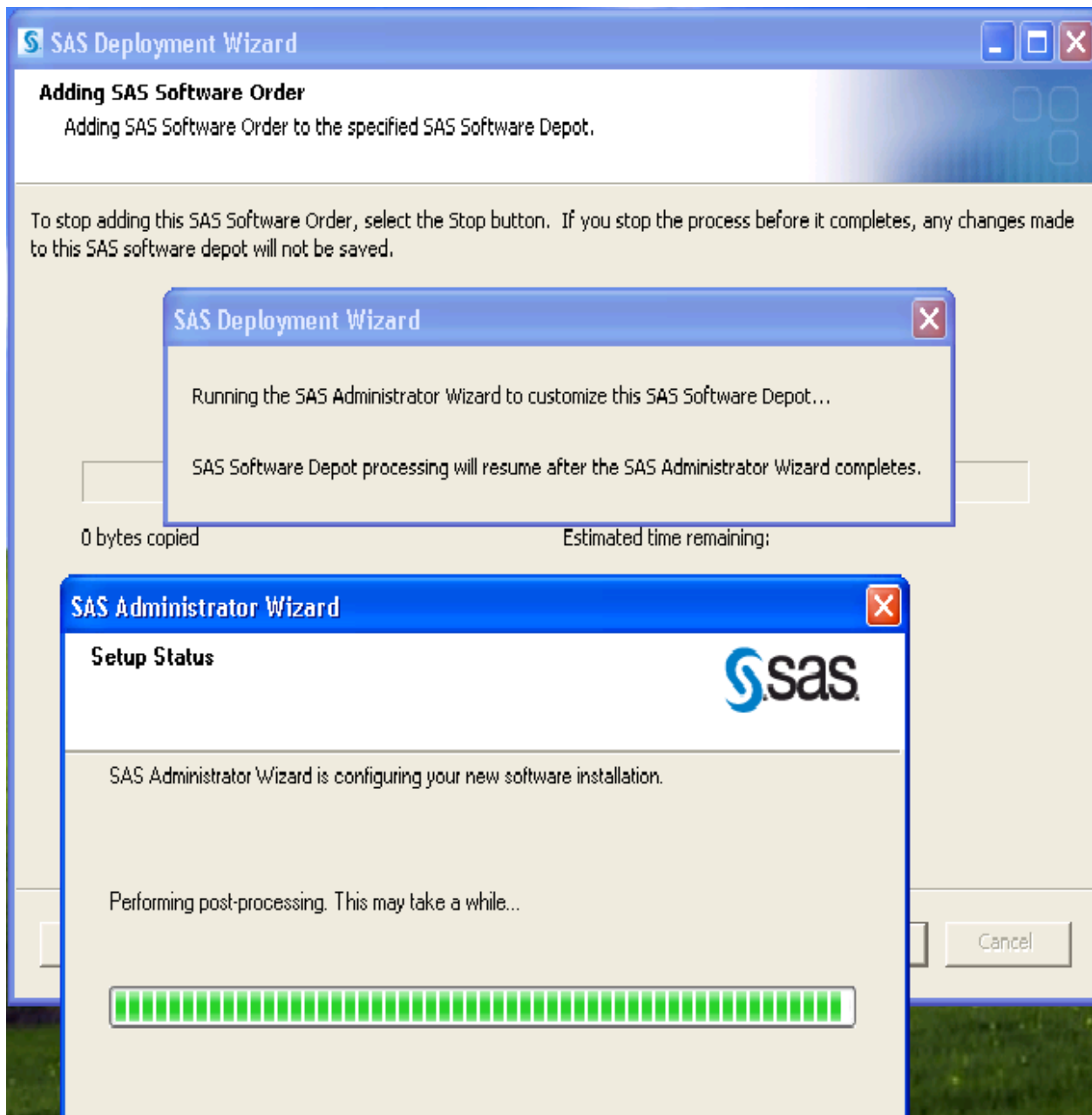


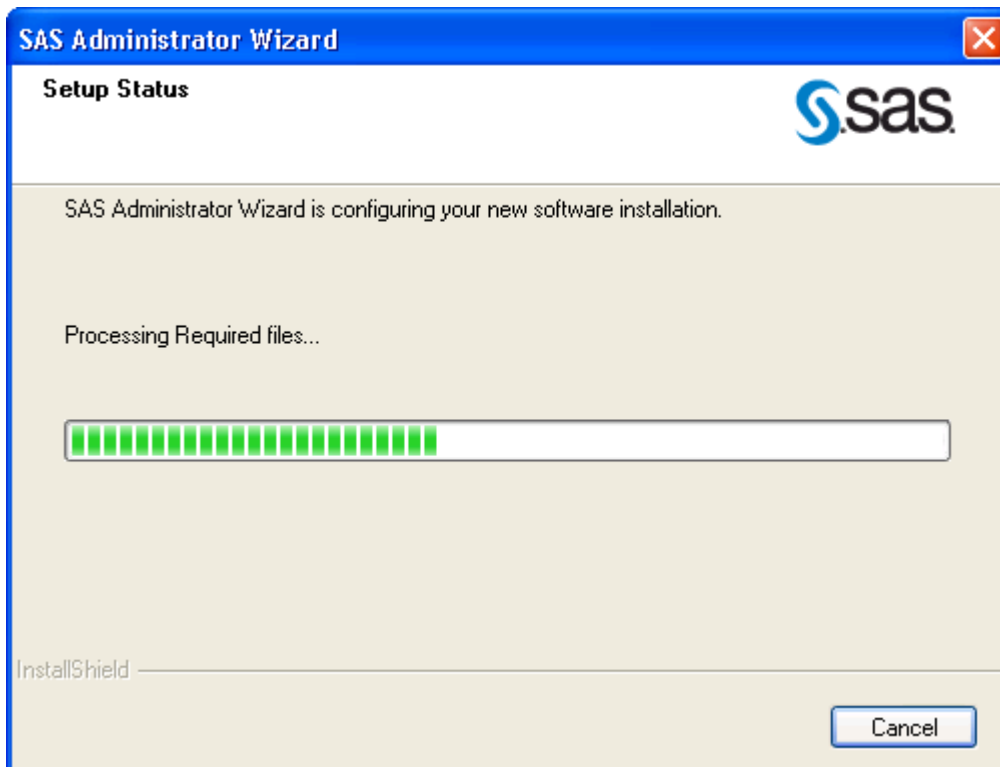


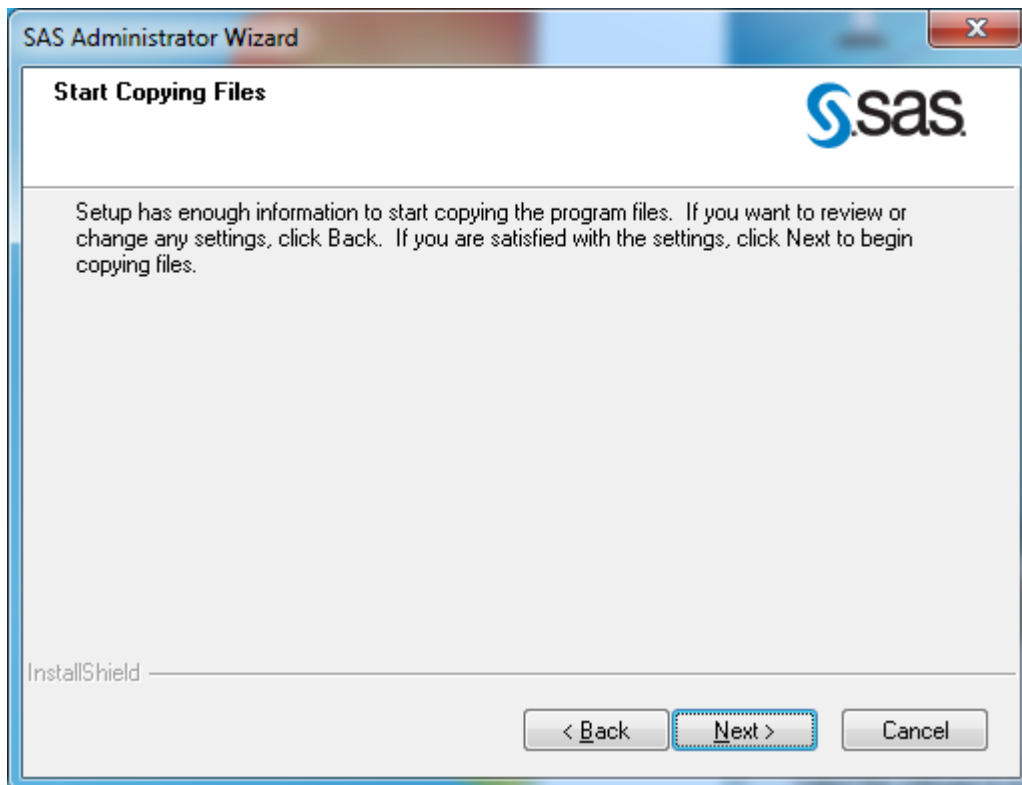
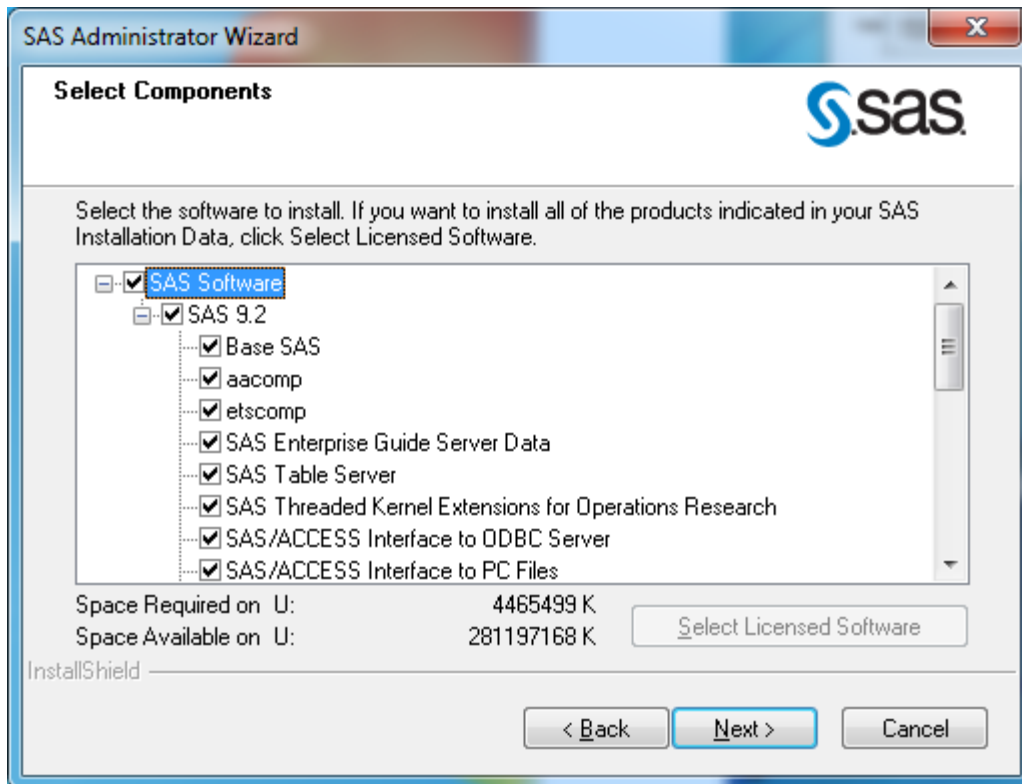


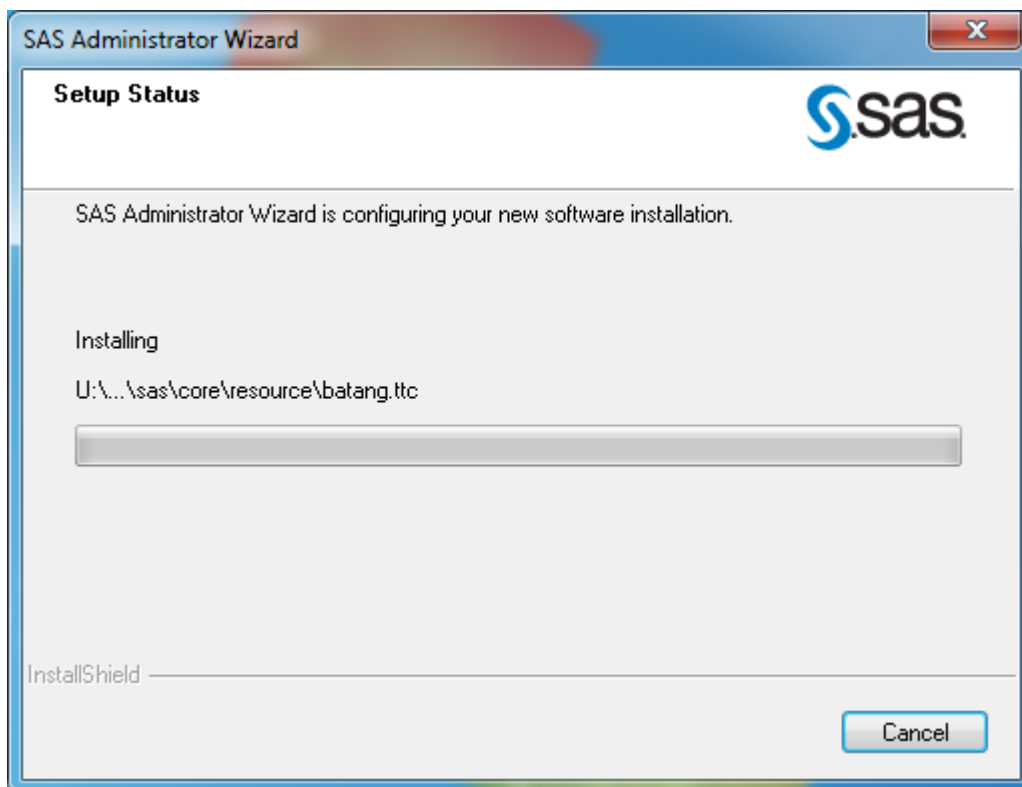
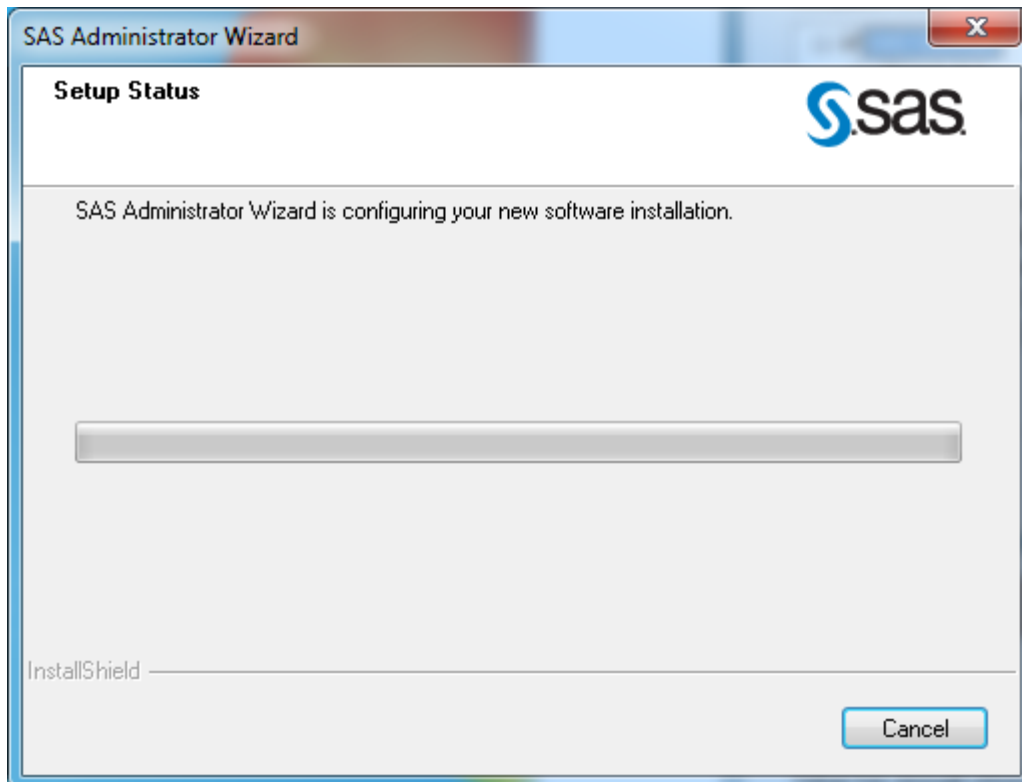


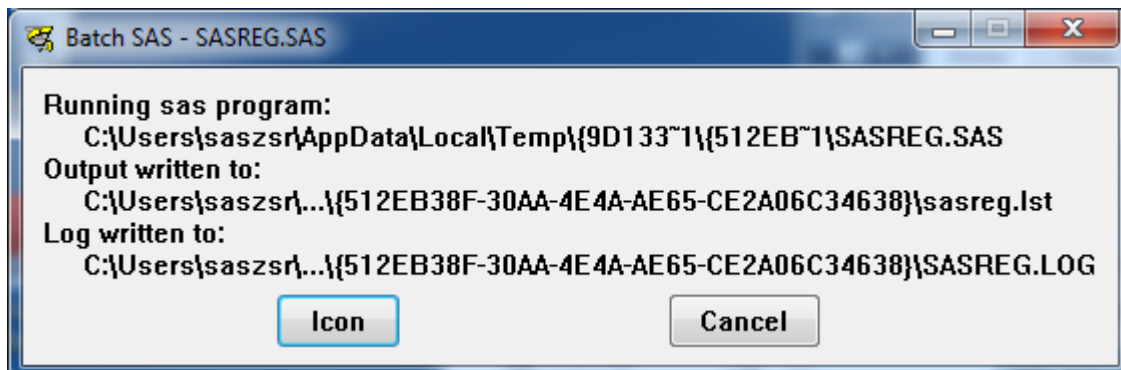
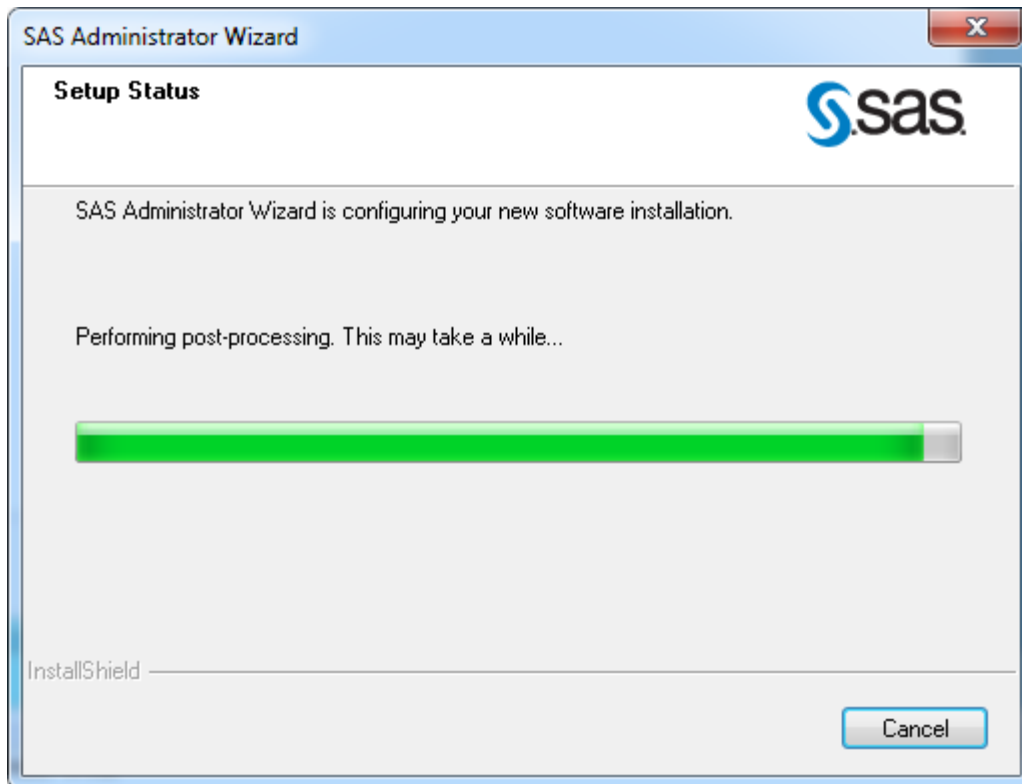
Note this always pops up in the background during the creation of the Client Users and Personal Users depots. These depots are created using the SAS Administrator Wizard.

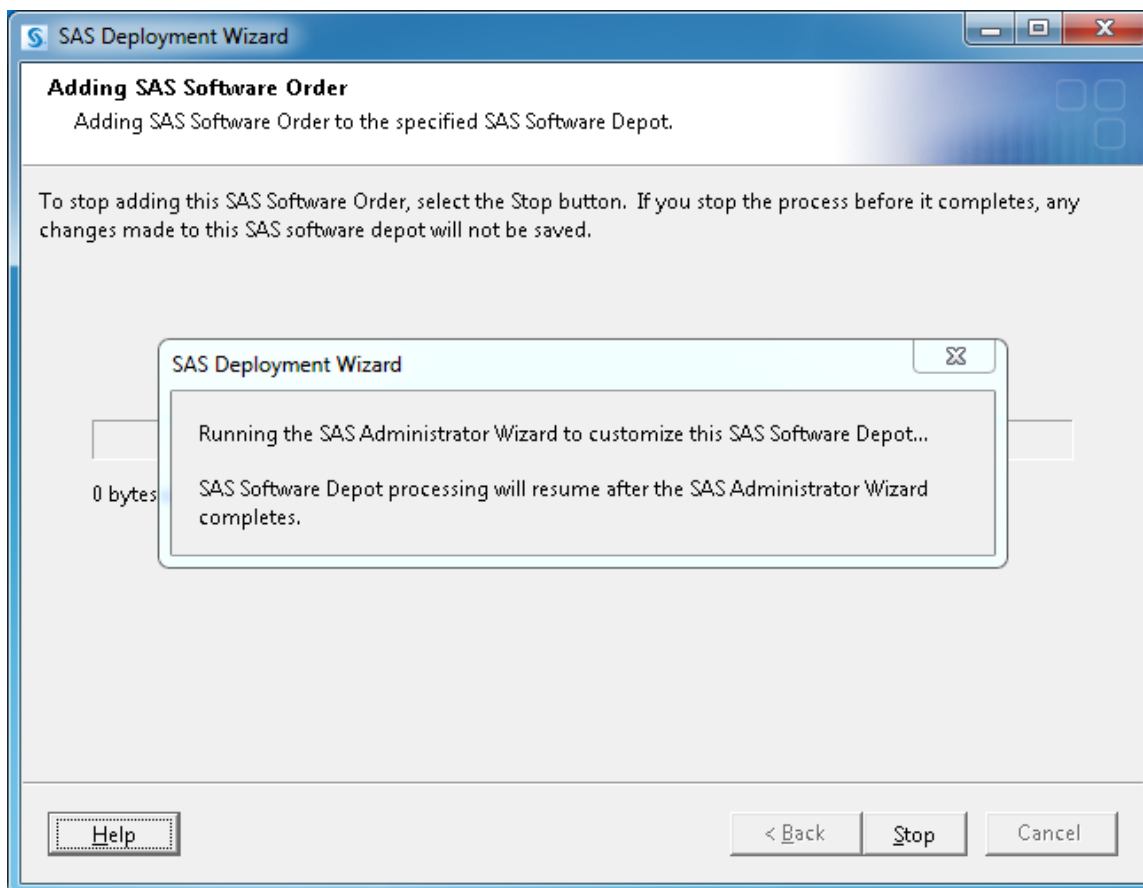
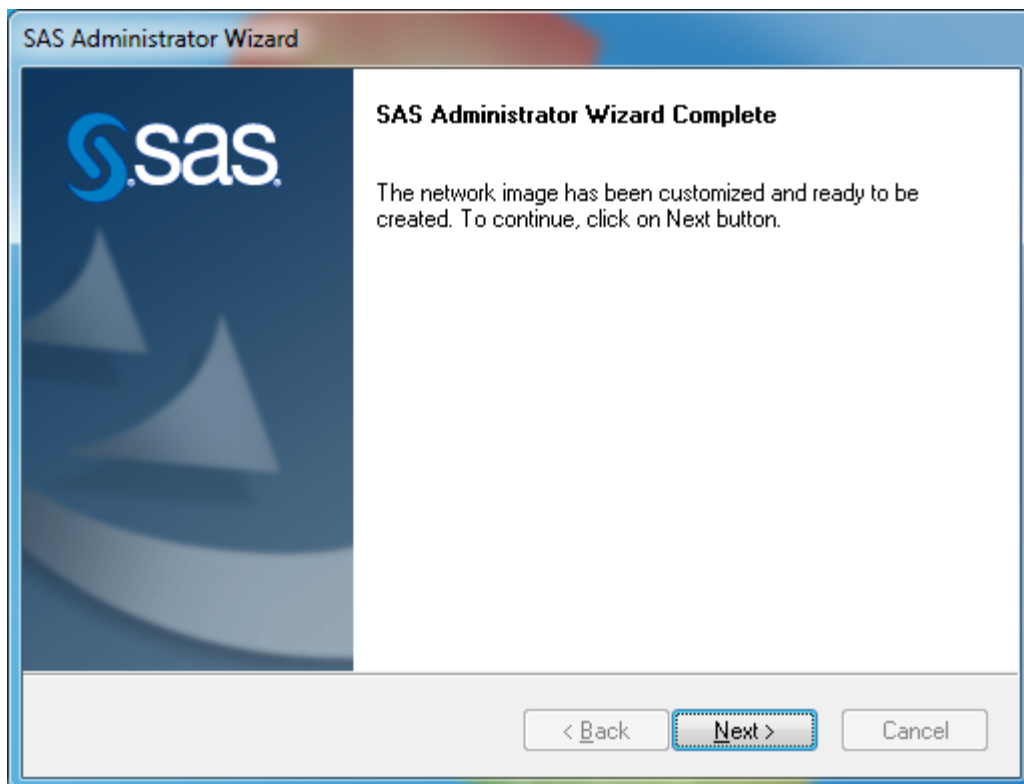


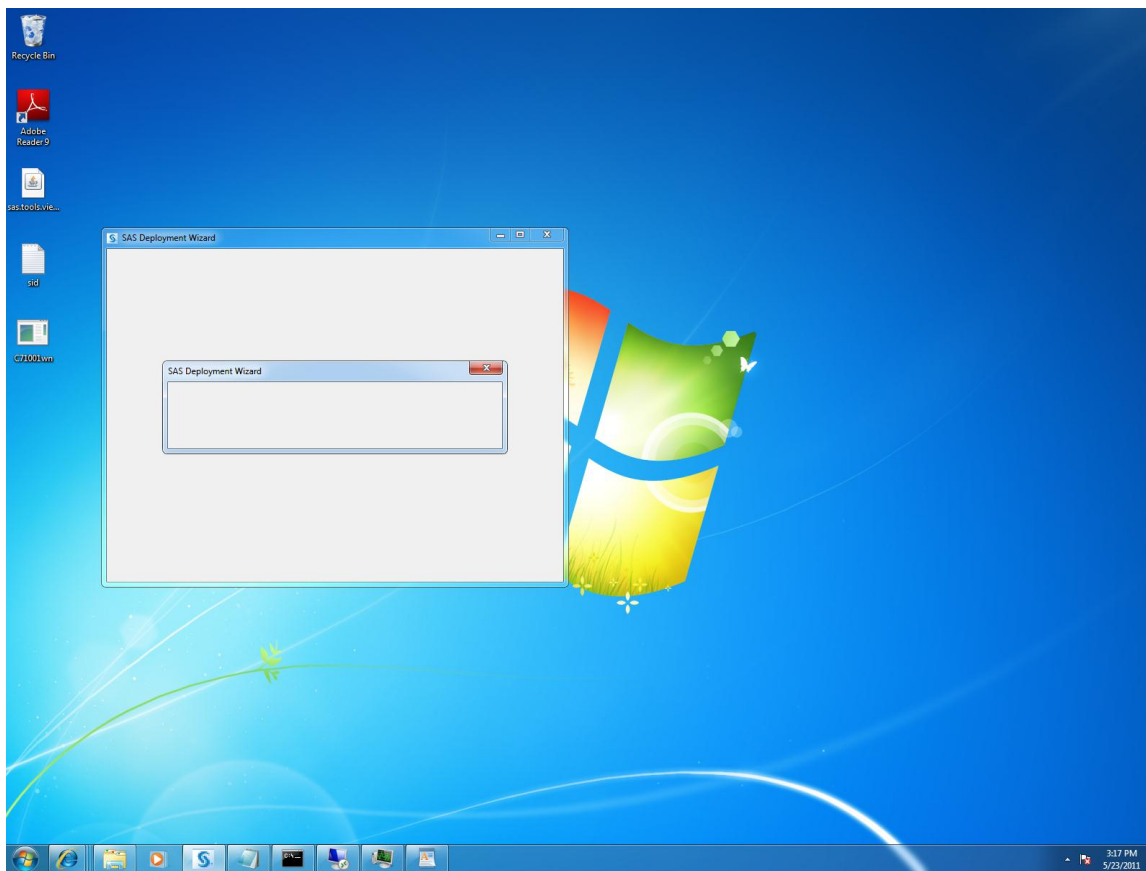
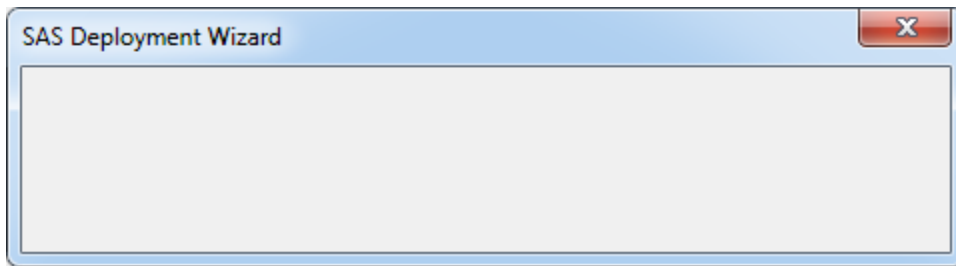












If it sits here for a while and goes white, the installation is still running. If there are extra programs running, close them. This includes anti-virus software, etc. To verify that the installation is running properly, open the Task manager (Ctrl+Alt+Del) and click on the Processes tab, you should see `deploywiz.exe` and `java.exe` running. The CPU and Memory usage for the `java.exe` process should be changing.

Windows Task Manager

File Options View Help

Applications Processes Services Performance Networking Users

Image Name	User Name	CPU	Memory (...)	Description
hkcmd.exe	saszsr	00	1,908 K	hkcmd Mo...
ieexplore.exe ...	saszsr	00	8,072 K	Internet ...
ieexplore.exe ...	saszsr	00	29,284 K	Internet ...
ieexplore.exe ...	saszsr	00	34,680 K	Internet ...
ieexplore.exe ...	saszsr	00	17,236 K	Internet ...
igfxpers.exe	saszsr	00	1,648 K	persisten...
igfxsrvc.exe	saszsr	00	1,844 K	igfxsrvc ...
igfxtray.exe	saszsr	00	2,068 K	igfxTray ...
java.exe *32	saszsr	18	90,788 K	Java(TM) ...
jusched.exe *32	saszsr	00	940 K	Java(TM) ...
mstsc.exe	saszsr	00	24,552 K	Remote D...
notepad.exe	saszsr	00	1,388 K	Notepad
taskhost.exe	saszsr	00	2,600 K	Host Proc...
taskmgr.exe	saszsr	00	2,700 K	Windows ...
winlogon.exe	SYSTEM	00	2,112 K	Windows ...

Show processes from all users

End Process

Processes: 43 CPU Usage: 25% Physical Memory: 19%

